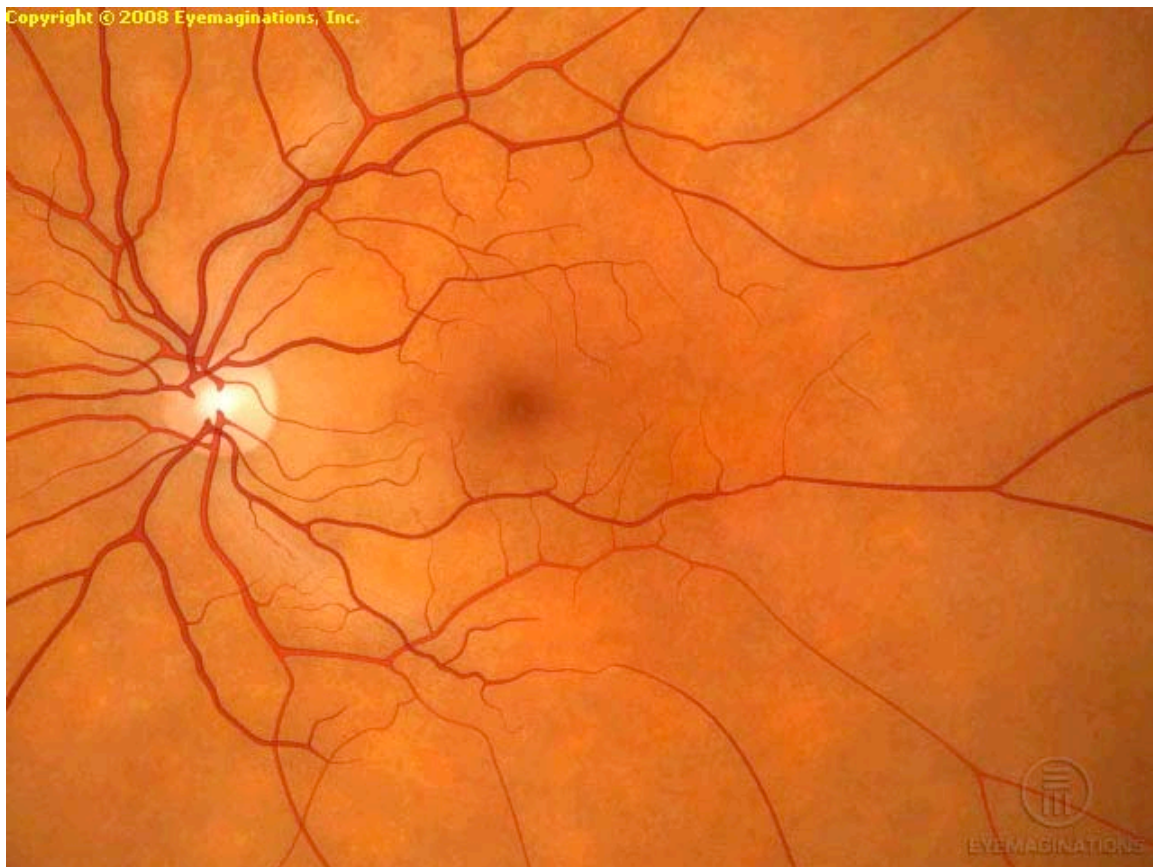


## General Anatomy of the Eye:

The front clear portion of the eye is called the cornea and allows a clear view for our vision. The protective, white covering on the outer wall of the eye is called the sclera. The iris is the colored ring on the front of the eye that controls the amount of light that enters the eye. The round opening in the center of the iris is the pupil. The iris is consisted of muscles that will dilate (widen) the pupil in dim light and constrict (narrow) the pupil in bright light. Located just behind the iris is the crystalline lens, which focuses light on the back wall of the eye. The center of the eye is filled with a jelly-like substance called vitreous. When light enters the eye, it passes through the clear cornea, pupil and lens and through the clear vitreous in the center of the eye. The light is then focused on the thin layer of light-sensing cells lining the back wall of the eye called the retina. The retina converts the light into signals, which are sent through the optic nerve to the brain where they are recognized as images. The retina has two main parts: the peripheral retina and the macula. The macula is the area in the center of the retina that is responsible for seeing fine detail. The peripheral retina gives us vision to the side, this is what we call peripheral vision.



*The above diagram shows the back wall of the eye, called the retina. The white spot is the optic nerve and the darker area in the middle of the diagram is the macula, the area responsible for central vision.*